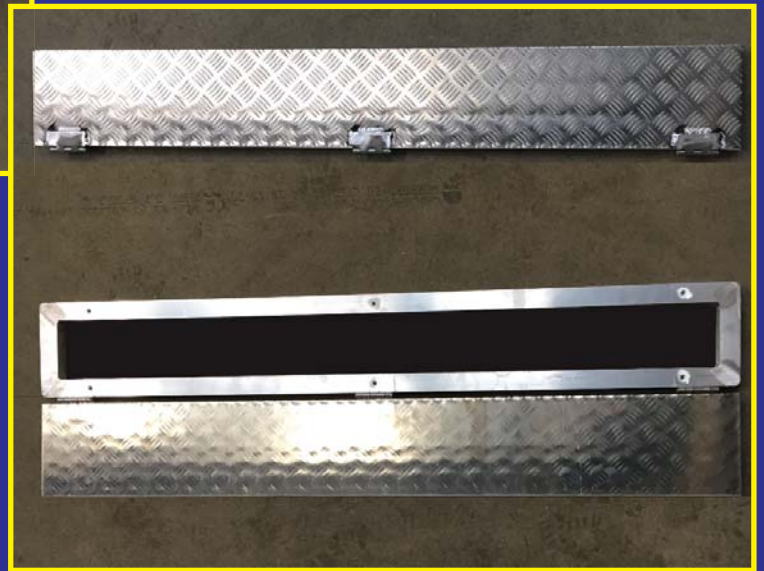


**safety platforms ltd**

20 Years of improving site safety



# BOARD LOADING HATCH USERGUIDE

*Call 01924 420820*

# INTRODUCTION

Designed to allow the easy passing of materials to upper floors by incorporating a small trapdoor opening between the joists.

Manufactured from strong, lightweight aluminium with an anti-slip surface it fits between the joists and requires minimal installation.

Designed for use in any timber floor situation, the frame is pre drilled to allow the unit to be screw fixed to timber flooring.

Using a prefabricated hatch saves labour, sourcing of individual components and removes human error.

The Safety Platforms board loading hatch is easy to move from plot to plot to improve productivity and obtain maximum use.



# SAFETY, PREPARATION & INSTALLATION



Check that all components are available and are functioning correctly.

Inspect the equipment before use to ensure it is not damaged, or failing to function properly.

Ensure you are using the correct PPE equipment.

The opening should be prepared with adequate support and the frame should be screwed to the chipboard floor ensuring all fixing holes are used to ensure a firm fixing.

(Fixing screws should be a minimum of 4mm (8G) x 45mm chip-board screws.)

Ensure the frame is fixed to the floor using the appropriate screw fixing, all the screws holes should be used.

Check that the frame, hinge and lid are not damaged.

Any damaged items should be replaced immediately and disposed of through recycling.

The ladder hatch should be regularly inspected by a competent person.

## Storage

When not in use all components should be stored in a safe area to prevent trip hazards, damage or loss of components.

## Specification

Aperture size of 1350mm x 125mm

Weight: 5.0KG

SWL: 200KG



# 01924 420820



15 Years of improving site safety